



LOT



REFERENCE NUMBER

186,001FT²

A11269498

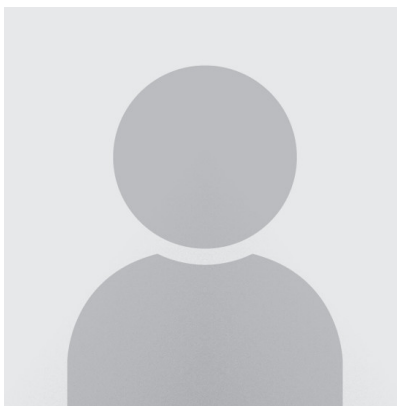
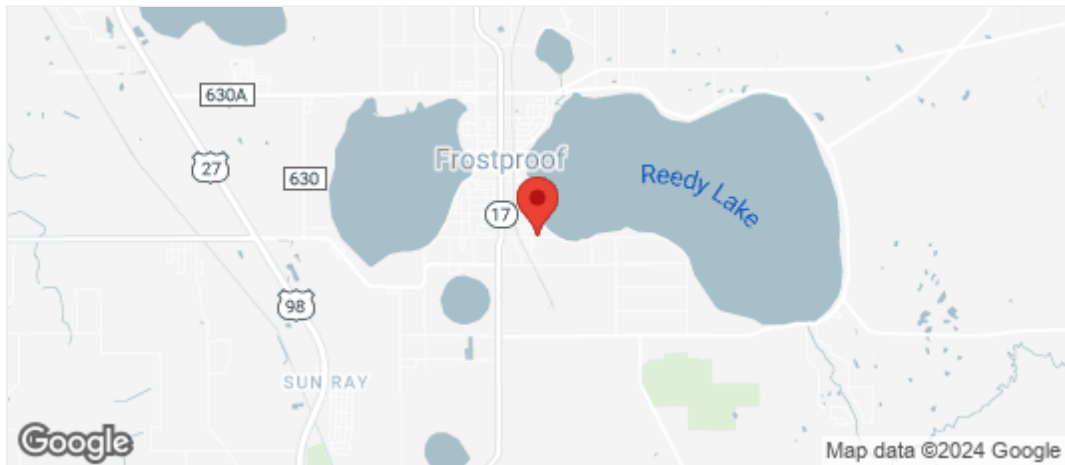
PRICE: USD 427,000

SUMMARY

Opportunity Zone Great Location in Frostproof, Florida - See the attachments to learn more about how Polk County is encouraging new business, and how it can benefit you! -Currently Zoned Agricultural, with Future Land Use of Residential. -Located less than a mile from Ferguson & Lowes Distribution Centers. -Within an hours drive toÂ LEGOLAND,Â Walt Disney World, theÂ Sebring Raceway, and many other Florida attractions. -In Polk County, Floridaâ€™s Business Friendly Tax Climate. -Ideal location for a recreational lifestyle community with some of the best fishing lakes, great golf courses, nature trails and state parks.

AMENITIES

- Electric
- City/County Maintained
- City Location
- Internet
- 2.5-5 Acres
- AG (Future Resident)



THEODORE KONIGSBERG

Infinity Commercial R.E.

1021 Ives Dairy Road Suite 119 - Miami, FL

ted@infinitycommercial.net

<https://www.sfpropertysearch.com/pdf-listing/4c5ebdbf23d1bc2bc100f9f7/>

LANGUAGES I SPEAK:

English